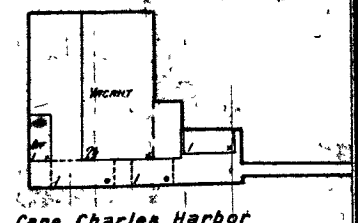
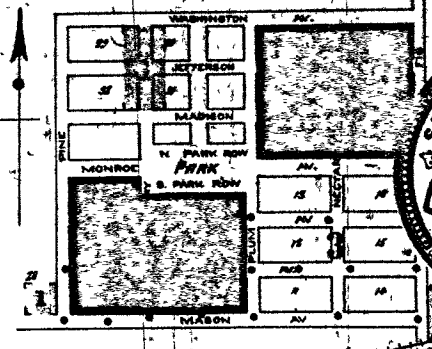


Formerly J. B. Jones & Son.
CRAB & OYSTER PACKING.



Cape Charles Harbor

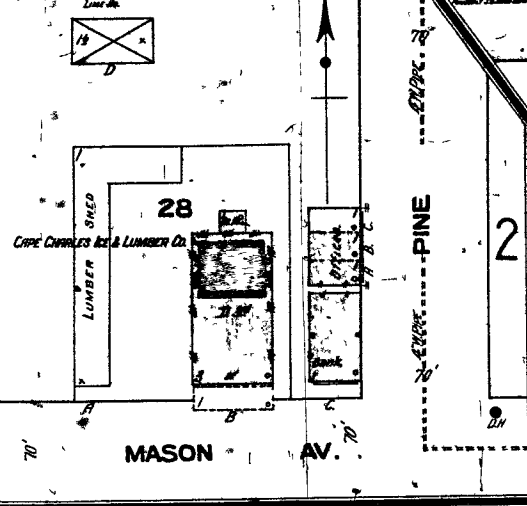


WATER FACILITIES
 Drive Wells owned by City Supply from "twenty 5" driven wells, combined capacity about 1700 gallons per minute. "Ten" and capacity 3500 gallons. Elevated to a level 10 ft. all from 200 direct pressure with main 12" necessary. 2 Ramsey triple pumps, 100 capacity, 100 gallons per minute each, operated by two 100 horsepower engines. The New York Pumping & Derrick R. Co. water system can be constructed in 14 city blocks & 20 pumps at ice factory, about 7 miles of 4" mains. 20 double hydrants. Average pressure 40 lbs.

Fire Dept.
 Volunteer Chief & 25 members. Stand 20 ft. 2 1/2" carbon hose 5 straight & 5 shut off nozzles. 1 fire chemical engine 100 gallon tanks 25 ft. hose. Fire alarm given by bell.
 Streets not graded topography level.

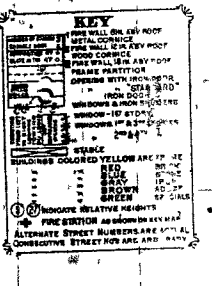
INDEX.

SPECIALS	
Arlington Hotel	1
Atlantic Construction Co. Fisheries Co.	2
Baptist Church	3
Bethany Methodist Episcopal Church	4
Cape Charles Ice and Lumber Co.	5
Centenary Methodist Church	6
Emmanuel P. E. Church	7
Farmers' Mfg Co. Cooper Shop	8
Fire Department	9
First Baptist Church	10
Hickel & Kellog Ice Factory	11
Jones, B. & Son, Crab and Oyster Packing (formerly)	12
Methodist Episcopal Church	13
N. Y. P. & N. E. Depot	14
Planters' Mfg Co. Cooper Shop	15
Post Office	16
Presbyterian Church	17
Public School (Negro)	18
St. Charles' Roman Catholic Church	19
School of the Holy Family	20
Virginia Hotel	21
Water Works Pumping Station	22

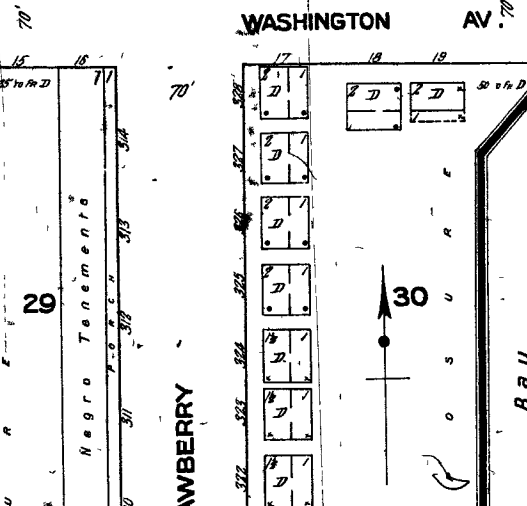


Cape Charles Ice & Lumber Co.

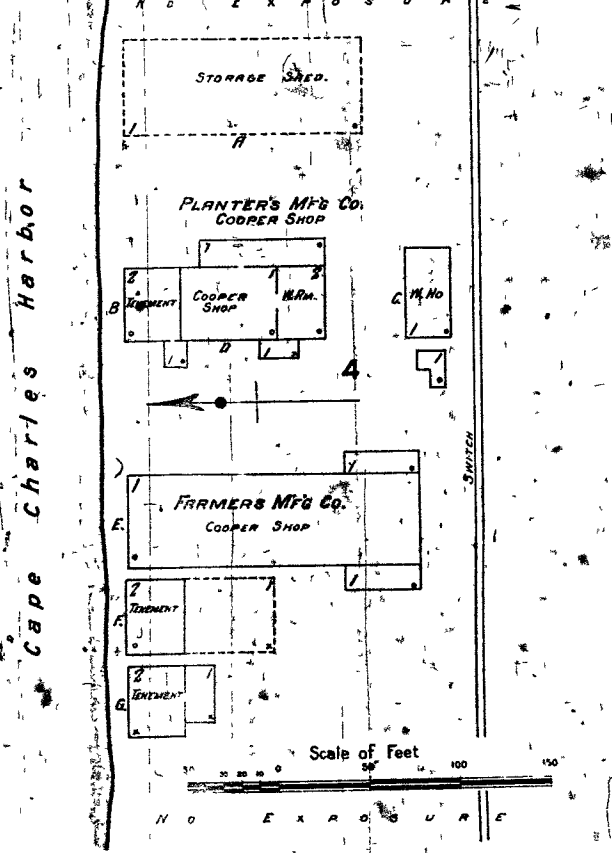
Cape Charles Harbor



SCALE 100 FT. TO AN INCH.



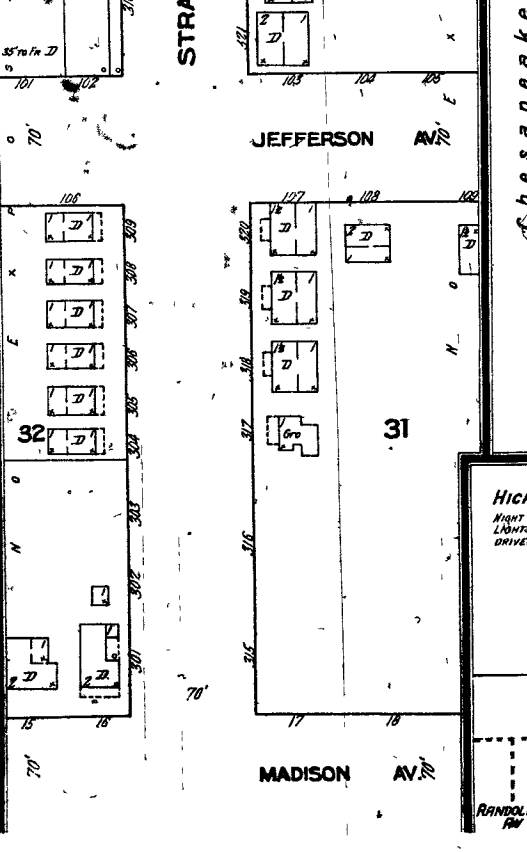
Negro Tenements



PLANTER'S MFG CO. COOPER SHOP

FARMERS MFG CO. COOPER SHOP

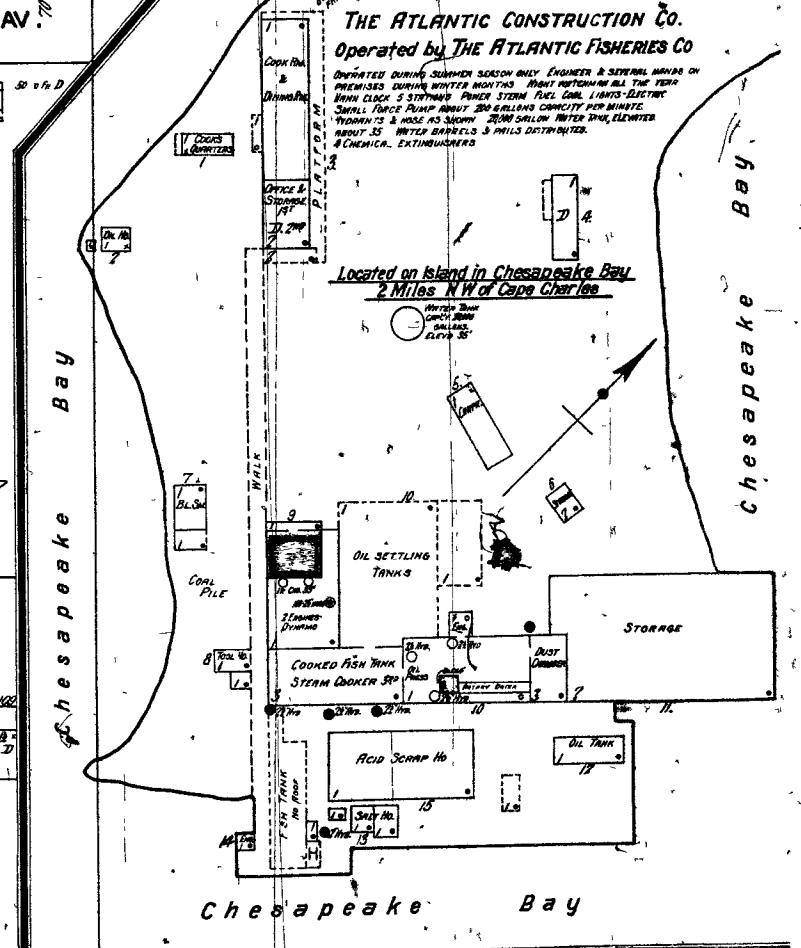
Scale of Feet



STRAWBERRY

JEFFERSON AV.

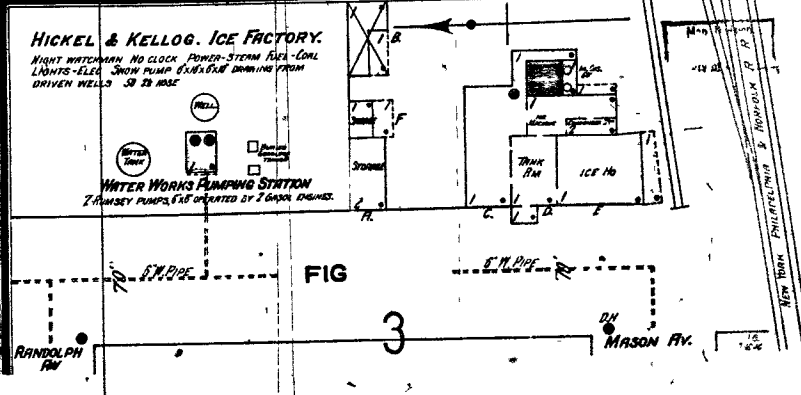
MADISON AV.



THE ATLANTIC CONSTRUCTION CO. Operated by THE ATLANTIC FISHERIES CO.

OPERATED DURING SUMMER SEASON ONLY. EMPLOYERS & SEVERAL HUNDRED MEN PRESENT DURING WINTER MONTHS. ABOUT 1000 TONS OF ICE PRODUCED ALL THE YEAR. 2000 GALLONS OF STEAM FUEL CONSUMED DAILY. 2000 GALLONS OF STEAM FUEL CONSUMED DAILY. 2000 GALLONS OF STEAM FUEL CONSUMED DAILY.

Located on Island in Chesapeake Bay 2 Miles N.W. of Cape Charles



HICKEL & KELLOG. ICE FACTORY.

NIGHT WATCHMAN. NO CLOCK. POWER-STEAM. FUEL-COAL. LIGHTS-ELEC. SNOW PUMP EXHAUSTIVE DRAWING FROM DRIVEN WELLS. 30 TO 4000.

WATER WORKS PUMPING STATION

2 RAMSEY PUMPS, 100 OPERATED BY 2 100 H.P. ENGINES.

MARCH 1910