



LAND PLANNING
LANDSCAPE ARCHITECTURE
CIVIL ENGINEERING

www.landstudiopc.com

P.O. BOX 10801
NORFOLK, VA 23513
PHONE: (757) 858-8585
FAX: (757) 858-2070

CIVIL

SURVEYOR
SHORELINE SURVEYORS
2314 COURTNEY AVE. P.O. BOX 736
ACCOMAC, VIRGINIA 23001
PHONE: 757.789.3800
FAX: 757.789.3862

OTHER

OFFICIAL SEAL

LANDSTUDIO, PC © 2018

CAPE CHARLES PHASE III
SOUTH PEACH STREET
CAPE CHARLES, VIRGINIA
SITE PLAN

No.	Revision/Issue	Date

Project Name and Address
CAPE CHARLES PHASE III
SOUTH PEACH STREET
CAPE CHARLES, VIRGINIA

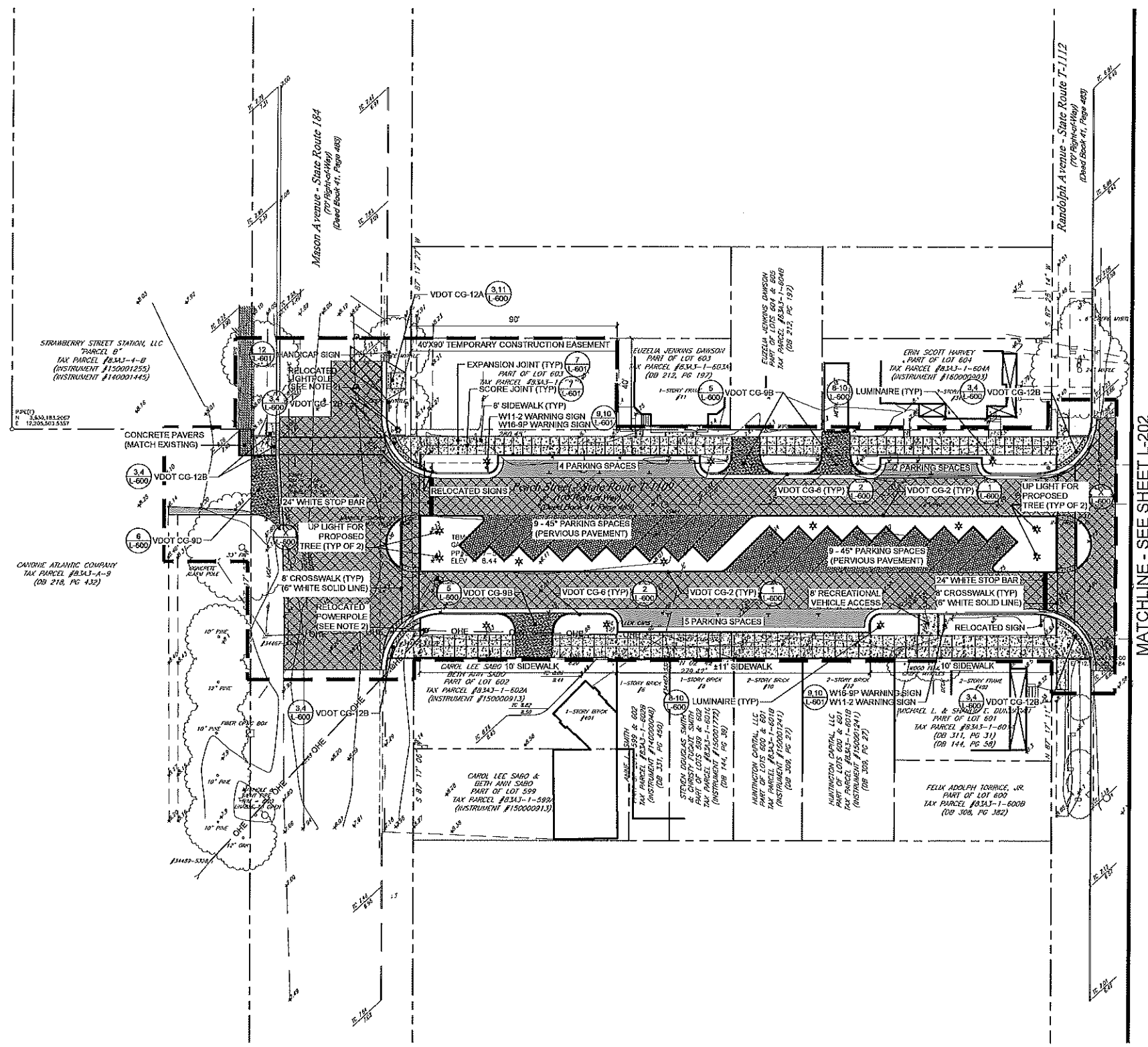
Project #	17002	Sheet	L-201
Designer	BWS		
Drawer	JJH		
Checker	BWS		
Approved	BWS		
Date	7/21/2018		9 OF 22
Scale	1"=25'		

SITE LEGEND

- LIMITS OF DISTURBANCE
- ASPHALT (1) (L-607)
 - PAVEMENT OVERLAY (2) (L-601)
 - CONCRETE (3) (L-601)
 - HEAVY DUTY CONCRETE (4) (L-601)
 - PERVIOUS PAVEMENT (5) (L-601)
 - CONCRETE PAVERS (6) (L-601)
 - TURFPAVE (11) (L-601)

SITE NOTES:

- 2% MAX. CROSS SLOPE ON ASPHALT & CONCRETE, SLOPE TO DRAIN
- EXISTING UTILITIES (MANHOLES, CLEANOUTS, LIGHTPOLES, ETC.) AFFECTED BY CONSTRUCTION SHALL BE RAISED TO FINAL GRADE.



MATCHLINE - SEE SHEET L-202

