

**CAPE CHARLES PHASE III
SOUTH PEACH STREET**
CAPE CHARLES, VIRGINIA
SITE PLAN

No.	Revision/Issue	Date

Project Name and Address
CAPE CHARLES PHASE III
SOUTH PEACH STREET
CAPE CHARLES, VIRGINIA

Project # 17002
Designer BWS
Draft JFH
Checked BWS
Approved BWS
Date 7/21/2018
Scale 1"=25'

L-202

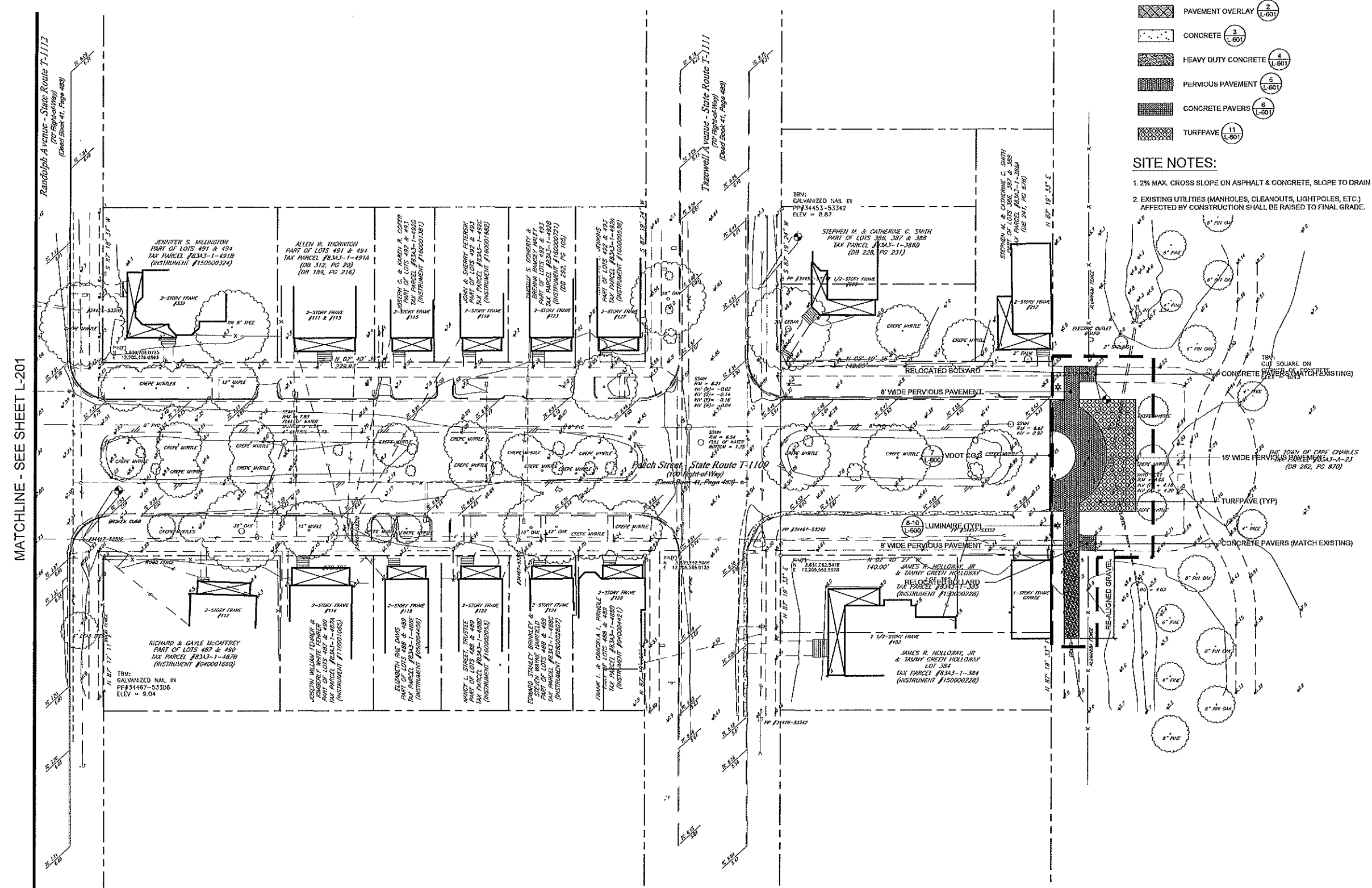
10 OF 22

SITE LEGEND

- LIMITS OF DISTURBANCE
- ASPHALT (1) (L-601)
- PAVEMENT OVERLAY (2) (L-601)
- CONCRETE (3) (L-601)
- HEAVY DUTY CONCRETE (4) (L-601)
- PERVIOUS PAVEMENT (5) (L-601)
- CONCRETE PAVERS (6) (L-601)
- TURFPAVE (11) (L-601)

SITE NOTES:

1. 2% MAX. CROSS SLOPE ON ASPHALT & CONCRETE, SLOPE TO DRAIN
2. EXISTING UTILITIES (MANHOLES, CLEANOUTS, LIGHTPOLES, ETC.) AFFECTED BY CONSTRUCTION SHALL BE RAISED TO FINAL GRADE.



MATCHLINE - SEE SHEET L-201

